

The Line

Supporters

Beneficiaries

Connecting supporters and beneficiaries of the American Mathematical Society

PAUL SALLY, JR., PHILANTHROPIST (1933-2013)



Photo: Sharat Ganapati

Paul J. Sally, Jr. was known widely as a mathematician, author, and a charismatic educator. A distinguished faculty member at the University of Chicago, he was also highly active within the AMS. Professor Sally served on the Board of Trustees, the Executive Committee, and several

policy committees, including the Committee on Education and the Committee on Publications. His books and scholarly publications are numerous and much sought-after. As a reflection of the many fronts on which Sally worked to further mathematics, he received the 2000 AMS Award for Distinguished Public Service. He is also the recipient of the inaugural AMS Award for Impact on the Teaching and Learning of Mathematics, the news of which he was pleased to receive, shortly before his passing in December 2013.

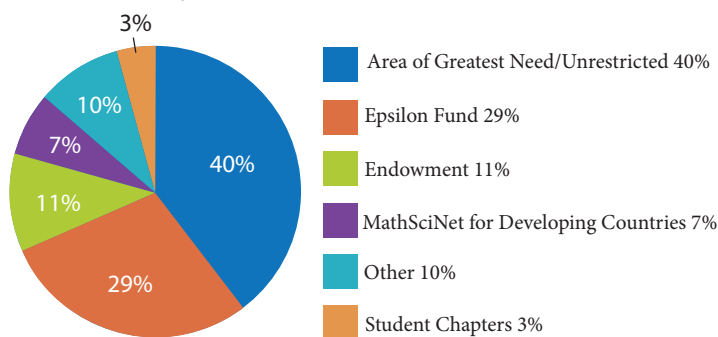
The AMS was also fortunate to know Paul Sally as a philanthropist. Motivated by his educational mission, Professor Sally established and personally endowed the Arnold Ross Lecture Series for talented high school mathematics students. "My admiration for Arnold's achievements and commitment is unbounded," Sally once remarked about Ross' work. Since 1996, the Arnold Ross Lecture Series has brought leading mathematicians directly to eager high school mathematics students around the country, building connections between future scholars and new ideas. The AMS is proud to be the steward of this series and is grateful to Professor Sally for creating it. With Professor Sally's passing, the lectures will provide a lasting legacy of two great mathematicians' passion for teaching mathematics to others.

125TH ANNIVERSARY CAMPAIGN



In celebration of its 125th anniversary, the AMS conducted a broad-based campaign in 2013 to raise charitable funds for much needed programs and activities. Led by President David Vogan and 2013 Board Chair Mark Green, the appeal identified five priority areas. Our donors responded enthusiastically, donating close to \$100,000 to benefit the mathematics community. As Vogan and Green said, "Somewhere in each of our lives, the AMS has made a difference... Donating to the AMS helps to open the door to others." The Society is grateful to those who chose to support the AMS. The following chart shows how donors directed their gifts.

125TH ANNIVERSARY CONTRIBUTIONS



INSPIRING INQUISITIVE MINDS



D. Andrew Beal

When attending an annual Paul Erdős Memorial Lecture, mathematicians contemplate intriguing concepts presented by experts in their field of research. These highly anticipated lectures are made possible by the creative philanthropy of D. Andrew Beal, a banker and mathematics enthusiast. Beal formulated a conjecture in number theory and, to further engage scholars about the work, established a prize for a proof or counterexample of the Beal Conjecture. In 2013, he increased the prize money to \$1 million to inspire additional inquisitive minds to become more aware of the promise of mathematics. The AMS holds the prize money in trust and, with the spendable income, is able to fund the Paul Erdős Memorial Lectures and other well-regarded AMS programs.

The 2014 Erdős Memorial Lecture was held at the AMS Spring Southeastern Section Meeting on March 22, 2014 at the University of Tennessee, Knoxville. The lecturer was Maria Chudnovsky of Columbia University. The title of her talk was "Coloring graphs with forbidden induced subgraphs".

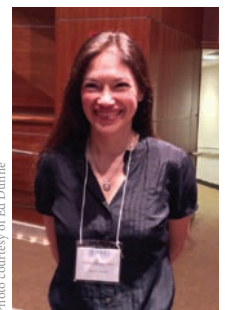


Photo courtesy of Ed Dunne

Maria Chudnovsky, Erdős Memorial Lecturer



EPSILON GIFTS CREATE EXTENDED VALUE FOR SUMMER MATH CAMPS



Students at PROTaSM: Puerto Rico Opportunities for Talented Students in Mathematics

The AMS Epsilon Fund for Young Scholars enriches the scholastic life of mathematically talented students through grants to summer mathematics programs. Two summer math camp directors, Luis Caceres-Duque, Director of PROTaSM and faculty at University of Puerto Rico, Mayaguez and Japheth Wood, Executive Director of NY Math Circle and faculty at Bard College tell us how the benefits from these grants extend beyond the actual dollars.

1. Can you describe the funding challenges your math camp experiences?

JW: We strive to keep the cost to our students as low as possible, and even lower for those with documented need. But we also must pay our instructors, teaching assistants, and program coordinator competitively. Simply put, the gap between these two aims is our funding challenge.

LCD: In Puerto Rico many think that gifted students will achieve their full potential on their own; it is therefore difficult to find funding for



Japheth Wood,
Executive Director
of NY Math Circle

programs that work with them ... Our program is completely free for students and we have been able to keep it that way, ... however, we find it hard to find sponsors who wish to make multi-year commitments.

2. What does AMS endorsement by way of the Epsilon Fund grant bring to your camp, if anything?

LCD: The recognition by the AMS of our program has been fundamental. It has helped to provide continuity and stability to the program. The support of the AMS gives credibility to the program, both for the participating students and for the potential sponsors. This support has helped us in obtaining other sponsors through a cascade effect.

JW: Being recognized by the AMS with an Epsilon Fund grant is quite prestigious. Professional mathematicians recognize the significance of this, and the Courant Institute, which provides us classroom space, appreciates this as well. The AMS recognition gives our summer math students a stronger awareness that the research math community is paying attention to them.

LCD: An email from a [former] student clearly shows the impact of our program:

"I wanted to tell you that I have just accepted a postdoc. That's three years in North Carolina State University, working with Michael Singer. I am very happy. And I cannot forget, ten years later, that not any of this would be happening if not for the efforts you did then and still do. I thank you very much."



Luis Caceres-Duque,
Director of PROTaSM

WWTBAM AT JMM CONTEST WINNER SPARKS OTHERS TO PLAY

Vivek Miglani, a junior from Marjory Stoneman Douglas High School in Parkland, FL won the *Who Wants to Be a Mathematician* national competition at the 2014 Joint Mathematics Meetings in Baltimore. Vivek is a young software developer who recently launched an app to help kids prepare for math contests.

"Thanks again for this excellent competition! I truly enjoyed the experience, and it was wonderful to meet the other extremely talented contestants. It is great that the AMS is able to conduct this competition which values and encourages mathematical talent. While sports are usually celebrated, it is wonderful that students interested in mathematics can also be encouraged. I sincerely hope that many more students gain the opportunity to participate in this competition."
-Vivek Miglani



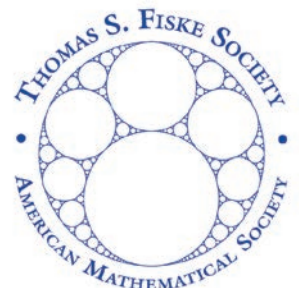
AMS President David Vogan and
WWTBAM winner Vivek Miglani

Photo by Sandy Hufaker

HAVE AN ENDURING INFLUENCE ON RESEARCH AND SCHOLARSHIP

Throughout the years, many men and women who care deeply about mathematics have decided to support the American Mathematical Society through their estate plans. They have chosen to give to the Society because of our permanence, our successful management of endowed funds, our knowledge of the mathematics community, and our oversight in ensuring their gift intentions are honored in perpetuity.

If you would like to explore the idea of making a legacy gift to the AMS, please contact Robin Marek, Director of Development. She is available to answer your questions, describe some options, and help you achieve your philanthropic goals. You can reach her at 401-455-4089 or at rxm@ams.org.



WWTBAM is funded in part by generous donor support.

DESIGNATED GIFTS HELP MATHEMATICS UNDERGRADUATES



Shalaine L. Buck
University of New Mexico
applied mathematics major,
statistics minor

The Waldemar J. Trjitzinsky Memorial Awards assist outstanding undergraduate mathematics students who may be in danger of not completing their major due to financial need.

“...the financial stress of finding the funds and working while attending UNM are starting to take their toll. With this scholarship, my constant worrying over money will be alleviated, and I can focus solely on my studies.” -Shalaine L. Buck

Waldemar, Barbara and Juliet Trjitzinsky created these awards through a bequest to the AMS. Gifts to the endowment can be designated for a specific AMS prize or award, such as the Trjitzinsky Awards or another of interest, or to the general endowment.



2013 WALDEMAR J. TRJITZINSKY MEMORIAL AWARD RECIPIENTS:

Michael W. Brown - University of New Mexico
Shalaine L. Buck - University of New Mexico
Paige Ferguson - University of North Dakota
Ruth Mariko Fujino - Winthrop University
John Douglas Helbig Jr. - Kean University
Chaoren Lin - SUNY at Binghamton
Paul George Pomattam - Vanderbilt University
Michael VanDyke - Idaho State University

EDWARD D. DAVIS A LEGACY LEFT TO CENTENNIAL FELLOWSHIP

Professor Edward D. Davis of Chester, NY became an AMS member in 1958 and maintained his membership until he passed on in February 2013. Professor Davis earned his Ph.D. from the University of Chicago in 1961, with Irving Kaplansky as advisor. He taught at Purdue University, Yale University, and the University of Chicago, before teaching at the State University of New York Albany, from which he retired. For many years, he generously supported the Society's Centennial Fellowship. Professor Davis provided for the AMS in his estate planning through his IRA. The Society marks his passing with sadness and is honored to receive his legacy gift for the benefit of the Centennial Fellowship.

MATHSCINET FOR DEVELOPING COUNTRIES (MDC) HELPS SCHOLARS AROUND THE WORLD



Photo courtesy of University of Dschang

“MathSciNet permits mathematicians of developing countries to be informed at every moment of recent developments in the different fields of mathematics.” -Professor Jean-Baptiste Patenou University of Dschang, Cameroon, Department of Mathematics and Computer Science

As part of its mission to promote mathematics scholarship and research around the world, the AMS offers deeply discounted MathSciNet® subscriptions to developing nations. For some nations, however, the reduced price is still out of reach and the AMS fully sponsors the subscriptions to MathSciNet for them. Your donation to the MDC program helps provide this invaluable resource to all these communities. In 2014, forty-five nations have institutions benefitting from this program, thanks to the charitable support of AMS donors.

PARTNERING WITH THE SIMONS FOUNDATION TO ENHANCE RESEARCH CAREERS

Kevin G. Milans says it well, “The AMS Simons Travel Grant is truly an excellent program, and I feel honored and fortunate to participate. It has made travel possible that might otherwise have been prohibitively expensive, and these trips have directly led to successful collaborations. I sincerely hope that this program remains strong and continues to help young researchers far into the future.”



Kevin was among 60 early-career mathematicians who received AMS Simons Travel Grants in 2011 for their research-related travel. Each grant award provides up to \$2,000 per year for two years for mathematicians who have completed their Ph.Ds. within the last four years.

In partnership with the Simons Foundation, the AMS launched the program in 2011, and 180 young mathematicians have participated since then. The Simons Foundation recently renewed its funding commitment for three years and the AMS is grateful for the Foundation's support of the successful program.



AMS

AMERICAN MATHEMATICAL SOCIETY

201 Charles Street
Providence, Rhode Island 02904-2294 USA

Nonprofit Org.
U.S. Postage
PAID
Permit No. 219
Providence, RI

INSIDE THIS ISSUE of **The Line:**

GENERATIONS OF MATHEMATICIANS CONNECTED THROUGH PHILANTHROPY

PAUL SALLY, JR., PHILANTHROPIST



EPSILON CAMPERS IN PUERTO RICO



TRJITZINSKY AWARD WINNER
SHALAINÉ L. BUCK



Photo: Sharan Ganapati



Robin Marek,
Director of
Development



Nancy Hoffman,
Development
Assistant

The Line is published by the AMS Development Office. For further information contact us by phone at 401-455-4111 or by email at development@ams.org.

To find out more about AMS programs or to make a donation visit www.ams.org/support.